

## SHOULDER MILLING

### CoroMill® 390

Versatile concept suitable for mixed production

For mixed production with a variety of component features and materials, CoroMill® 390 cutters are your "go to" cutter. With an assortment including many different types of tools and a wide selection of corner radii and insert sizes for various depth requirements,

- Diameter: 9.7-200 mm (0.375-8.000 inch)
- Max. cutting depth: 15.7 mm (0.618 inch)



### CoroMill® 490

First choice for general and repeated shoulder Milling.

CoroMill® 490 is a light-cutting, positive concept with four cutting edges. Precise cutter bodies and insert location along with a low-vibration machining process provide accurate shoulders without mismatch. Covers roughing to finishing.

- Diameter: 20-250 mm (0.750-10.000 inch)
- Max. cutting depth: 10 mm (0.394 inch)



## PROFILE MILLING

### CoroMill® 300

Round insert cutters with light-cutting action for roughing to semi-finishing

The light-cutting action of CoroMill® 300 allows for smooth entries and exits and for use of extended tool set-ups. The concept is available in neutral and positive design.

Neutral design:

- Diameter: 10-42 mm (0.375-1.25 inch)
- IC05 to IC16

Positive design:

- Diameter: 25-200 mm (1-8 inch)
- IC08 to IC25.4

Max. cutting depth: IC/2



### CoroMill® 200

Robust face milling and profile cutter

A very stable rougher and a versatile tool. It is a good choice for general milling, as well as for die- and mold-making, and should be the First choice for roughing operations. Strong cutting edges make the cutter resistant to tough conditions with interruptions and/or abrasive scale (skin).

- Diameter: 25-160 mm (1.000-10.000 inch)
- Max. cutting depth: 10-20 mm (0.375-0.750 inch)



## CoroMill® 245

General purpose cutters with reliable performance

A simple yet sophisticated and reliable cutter with 4 cutting edges, whether for demanding roughing or when you seek that mirror finish.

Insert size 12

- Diameter: 32-250 mm (1.250-10.000 inch)
- Max. cutting depth: 6 mm (0.236 inch)

Insert size 18

- Diameter: 80-250 mm (3.000-10.000 inch)
- Max. cutting depth: 10 mm (0.394 inch)



## CoroMill® 345

First choice for highly productive face milling

When high productivity is your priority, these extremely robust and tough cutters are your first and best choice thanks to their ability to handle a combination of large cutting depths and high feed per tooth. Shim protection offers extra security.

- Diameter: 40-250 mm (1.500-10.000 inch)
- Max. cutting depth: 6 mm (0.236 inch)
- Cutting edges: 8



## CoroMill® 415

Small diameter, high feed face milling cutter

With iLock™ technology, CoroMill® 415 is a reliable secure solution, resulting in less scrap workpieces. The iLock™ insert seat also makes the small inserts easier to handle

- Diameter: 13-32 mm (0.500-1.250 inch)
- IC05 Max. cutting depth: 0.85 mm (0.034 inch)
- IC07 Max. cutting depth: 1.2 mm (0.047 inch)



## CoroMill® 745/725

Multi-edge cutters for best production economy

CoroMill® 745 offers multi-edge, double-sided inserts with the cutting performance of a positive single-sided concept. Available also with a 25° entering angle as a productivity booster in CoroMill® 725.

**CoroMill® 745**

- Diameter: 63-315 mm (2.500-12.000 inch)
- Max. cutting depth: 5.2 mm (0.205 inch)
- Cutting edges: 14
- 42° entering angle



**CoroMill® 725**

- Diameter: 63-160 mm (2.500-6.000 inch)
- Max. cutting depth: 2.8 mm (0.110 inch)
- 25° entering angle



## CoroMill® 419

Five-edged milling concept for roughing to semi-finishing

CoroMill® 419 offers excellent performance in many material groups and has great potential for optimization. The high feed and light cutting action enable a soft sound, creating an operator-friendly environment.

- Diameter: 32-100 mm (1.260-3.940 inch)
- Max. cutting depth: 8 mm (0.315 inch)



## CoroMill® 210

Productive roughing concept for high-feed face and plunge milling

First choice when high metal removal rate is the first priority. A 10° entering angle allows for extreme feed rates when face milling. This directs the cutting forces in an axial direction, providing a stable cutting action and no vibration tendency.

IC09:

- Diameter: 25-66 mm (1.000-2.500 inch)
- Max. cutting depth: 1.2 mm (0.047 inch)

IC14:

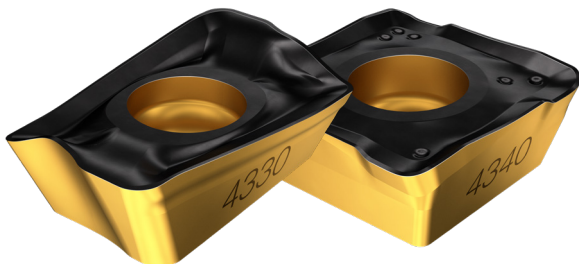
- Diameter: 52-160 mm (2.000-6.000 inch)
- Max. cutting depth: 2.0 mm (0.079 inch)



### STEEL MILLING GRADES

## GC4330 / GC4340

Grades GC4330 and GC4340 are CVD grades optimized for steel milling, offering substantially increased tool life and improved process security. GC4330 is First choice for roughing to semi-finish face milling, while GC4340 is First choice for rough shoulder milling and groove milling.



## GC1130

For light roughing to finishing operations, steel milling insert GC1130 is a highly reliable grade that provides superior performance in all machining conditions for various component features. GC1130 offers long tool life for a predictable and secure milling process.

