

Profitable end milling

New small diameter end mills

This versatile cutter concept generates a high-quality 90-degree shoulder in various end milling operations. The smaller 07 insert size extends the range with tools for component features requiring small diameter cutters with cutting depth capacity up to 5.8 mm (0.223 inch). The small inserts enable a high number of inserts in the cutter for superior productivity.

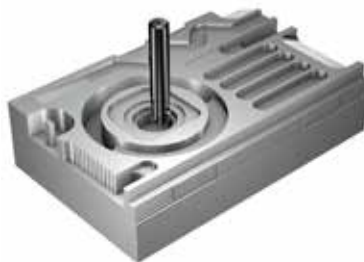
Three reasons why the new CoroMill 390 will make your production more profitable

Durable and secure inserts



Light-cutting insert geometries and high performance grades offer secure milling in all materials. The new Zertivo™ grade GC1130 performs brilliantly when milling steel. Use E-tolerance inserts for highest sharpness and M-tolerance inserts for highest edge security.

One tool. Many solutions.



Shoulder, slot, pocket and face milling and more, this versatile cutter design allows a wide range of operations with the same tool. As a result of fewer tool changes you'll benefit from shorter cycle times as well as reduced tool inventory.

Security in production



A new torque key is delivered with every CoroMill® 390 cutter with size 07 inserts. It makes it easy to mount inserts with the correct clamping force, giving reliable and consistent tool life and increased process security.

For long overhangs, integrated Silent Tools™ vibration damping gives secure milling with long, slender tools.

GC1130: The new first choice grade for shoulder milling in steel

The new high-quality PVD coating in GC1130 is produced with Zertivo™ technology which adds a new dimension of process control and security to your workshop.

Benefits

- Secure machining with long and predictable insert tool life thanks to a clean and intact edge
- High metal removal rate, even in difficult and unstable conditions
- Great performance in both wet and dry machining

Application

- Challenging machining e.g. unfavourable tool paths, deep cavities and long overhangs
- Roughing to finishing
- Wet and dry machining (dry machining is recommended)

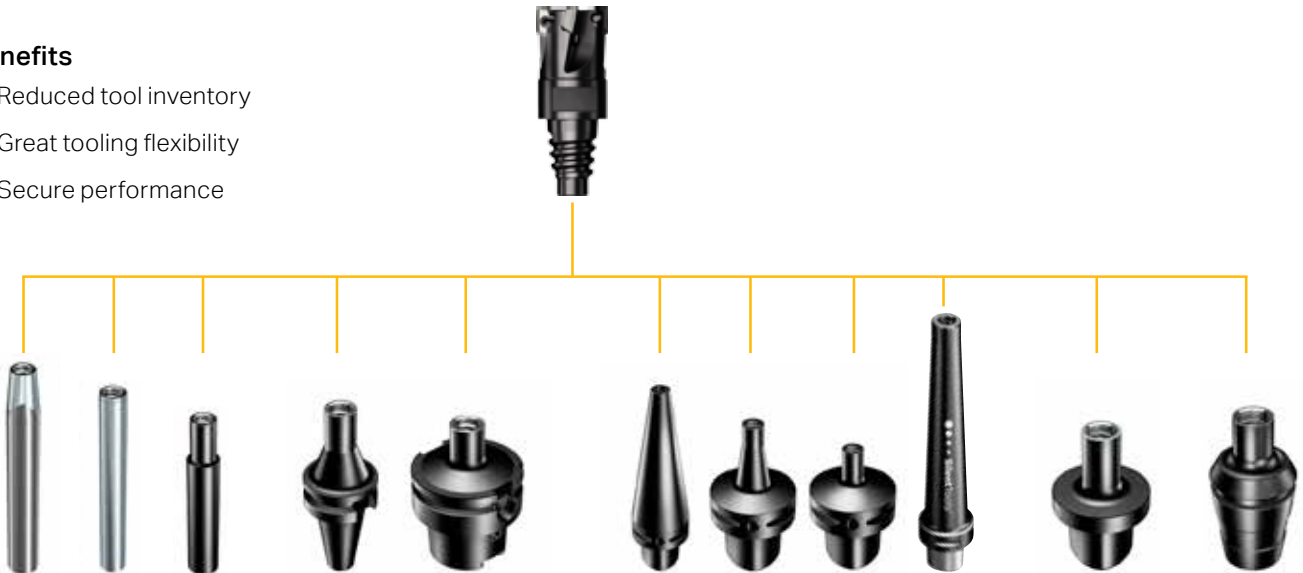
P ISO application area

Modular system Coromant EH

Get the required reach and accessibility with shanks and modular adaptors. In short overhang applications you can increase your productivity due to short gauge length with integrated machine adaptors.

Benefits

- Reduced tool inventory
- Great tooling flexibility
- Secure performance



CoroMill® 390 overview

Insert size	Max. cutting depth	Diameter	Cutter types	Couplings
07	5.8 mm (0.223 inch)	9.6–25 mm (0.375–1.000 inch)	End mills, integrated Silent Tools™	Cylindrical shank, Coromant EH
11	10 mm (0.394 inch)	12–84 mm (0.472–3.307 inch)	End mills, face mills, long edge, integrated Silent Tools™	Cylindrical shank, Weldon, Coromant EH, MSSC, Coromant Capto®, Arbor
17	15.7 mm (0.618 inch)	25–125 mm (0.984–4.921 inch)	End mills, face mills	Cylindrical shank, Weldon, Coromant EH, Arbor
18	15.7 mm (0.618 inch)	40–200 mm (1.575–7.840 inch)	Face mills, long edge	Coromant Capto®, Arbor

Head office:
 AB Sandvik Coromant
 SE-811 81 Sandviken, Sweden
 E-mail: info.coromant@sandvik.com
www.sandvik.coromant.com